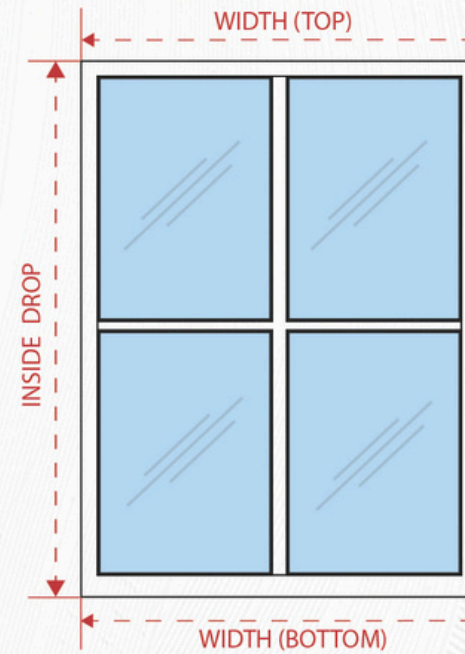
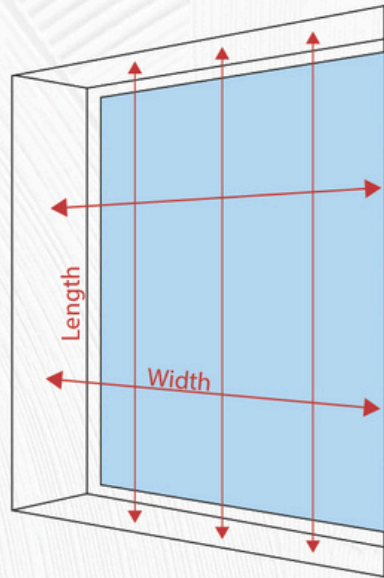


A photograph of a window with blue vertical blinds. The blinds are partially open, revealing a view of a residential area with houses and trees. In the foreground, there is a wooden table and a wooden stool. A red banner with white text is overlaid on the image.

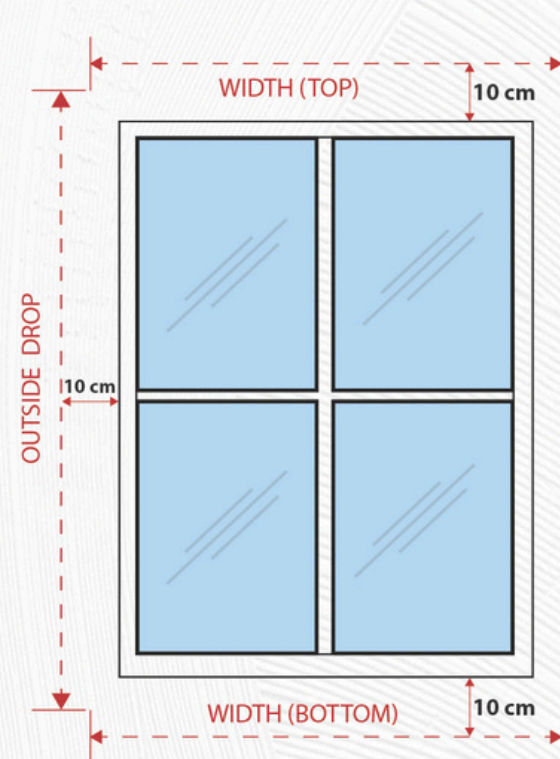
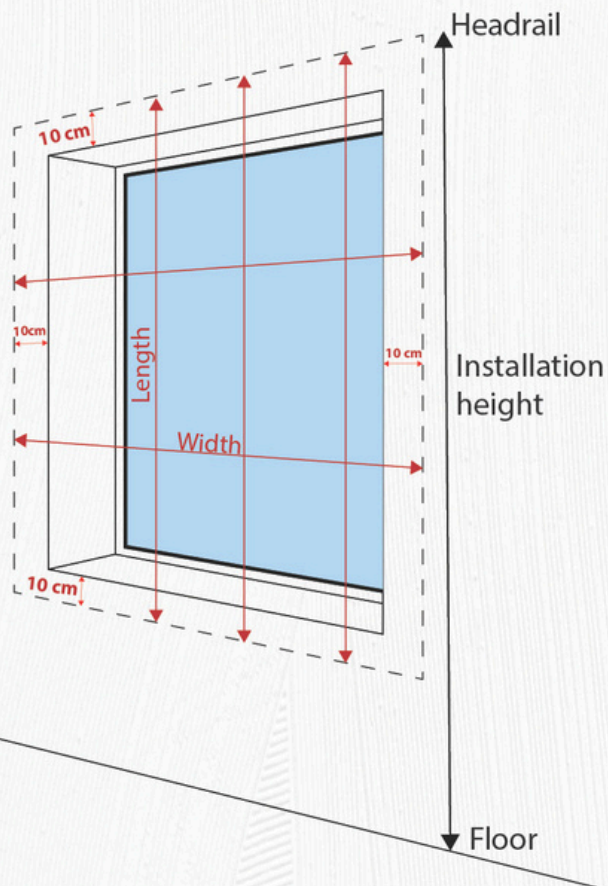
# VERTICAL BLINDS CATALOGUE

# BLINDS MEASUREMENT GUIDE

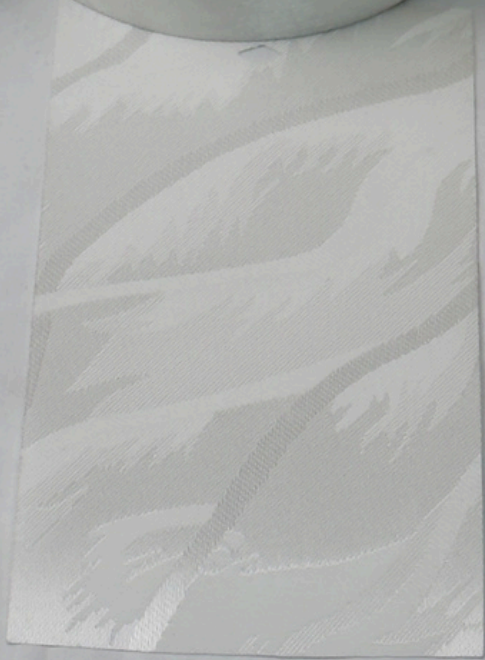
## INSIDE MOUNT



## OUTSIDE MOUNT



- Preferred unit of measurement is millimeters (mm)
- For blinds going inside the sill, give exact measurements to the mm, do not give an allowance
- When measuring the outside mount, make sure to add an allowance of 10 cm to each side





**LS2501**



**V0502-3**



**V73-WHITE**



**V007-3**


**WHITE**



**V9014-WHITE**



**T480-WHITE**



**T480-1**  
**OFF WHITE**



**V9014-CREAM**



**LS2515**



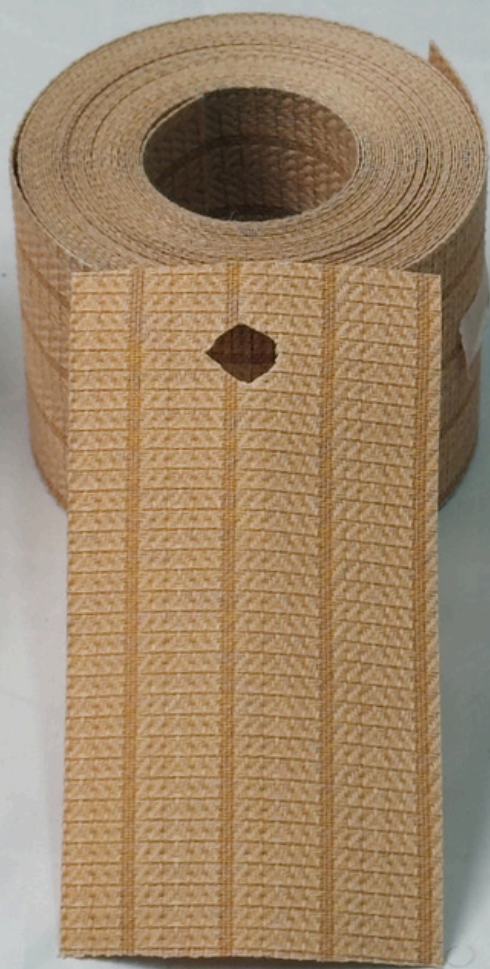
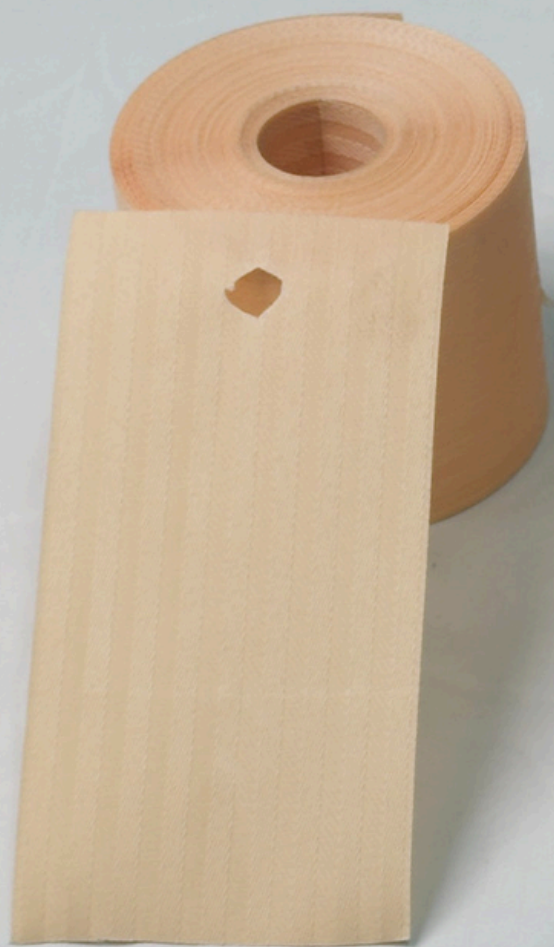
**LS9816**

A roll of light brown woven fabric with a diamond pattern, partially unrolled. The fabric has a textured, woven appearance with a repeating diamond or lattice pattern. The roll is positioned diagonally, with the unrolled portion extending from the top left towards the bottom right. The background is a plain, light-colored surface.

**T480-2**



**T480-4**



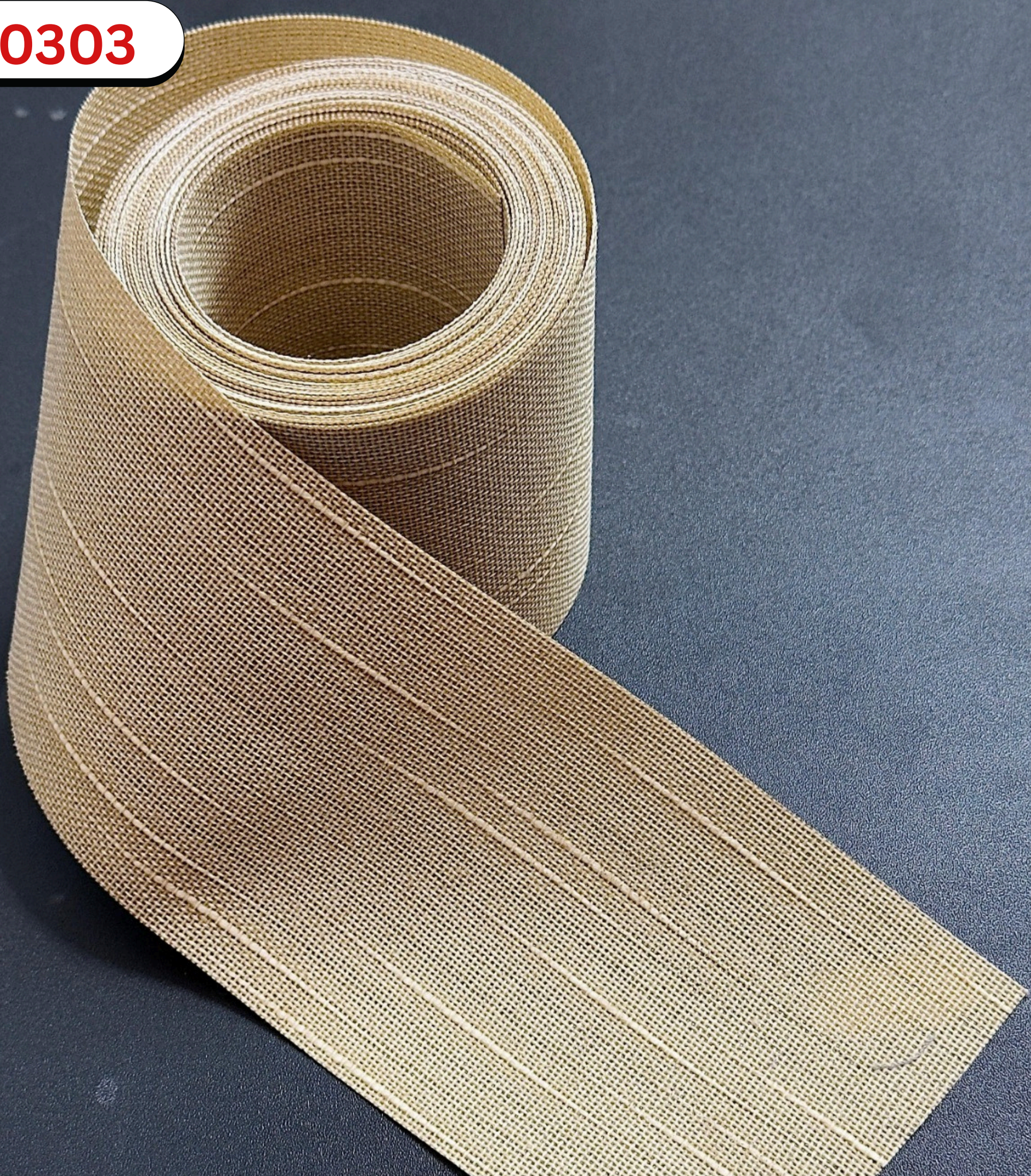


**V73-04**

**LS0302**



**LS0303**



A roll of brown woven fabric tape, likely made of jute or a similar natural fiber. The roll is positioned in the upper left quadrant, with a section of the tape unrolled and extending diagonally towards the bottom right. The tape has a distinct woven texture with visible vertical and horizontal threads. The background is a light-colored, slightly wrinkled fabric.

**LS0305**



**C107**  
**COFFEE BROWN**

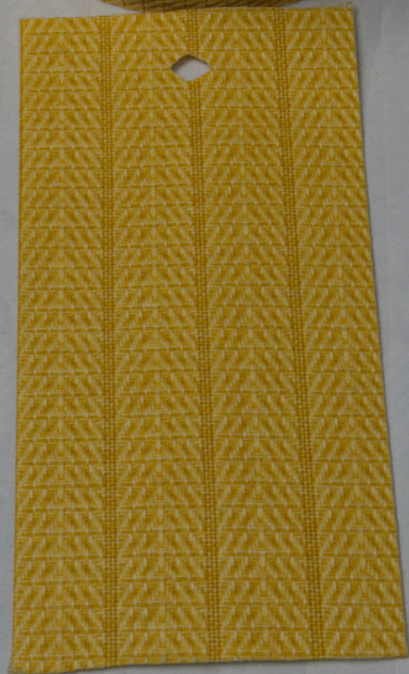
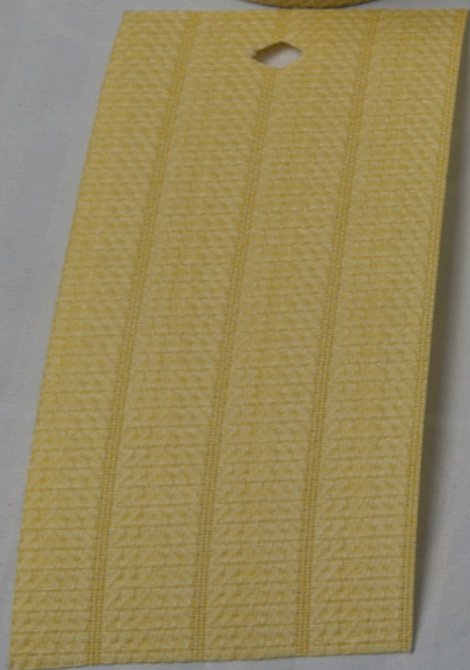
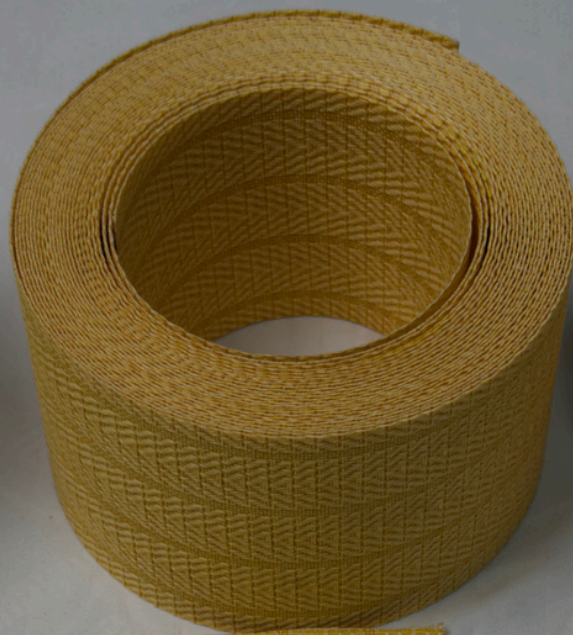


**T480-9**





**C107-31**





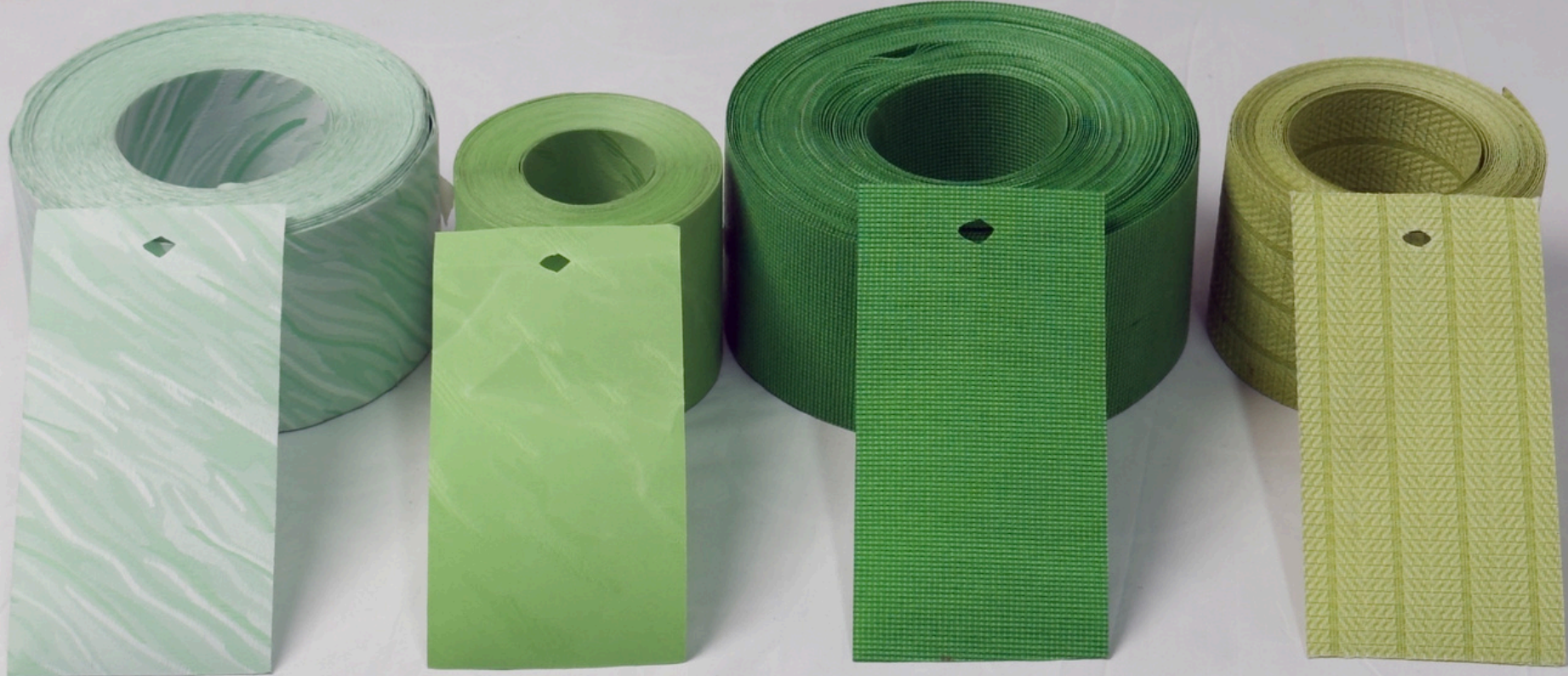
**C107-3**



**V73-YELLOW**



**T480-8**





**V430-GREEN**



**V9014-FERN GREEN**



**V9014-DARK GREEN**



**V03-LIGHT GREEN**



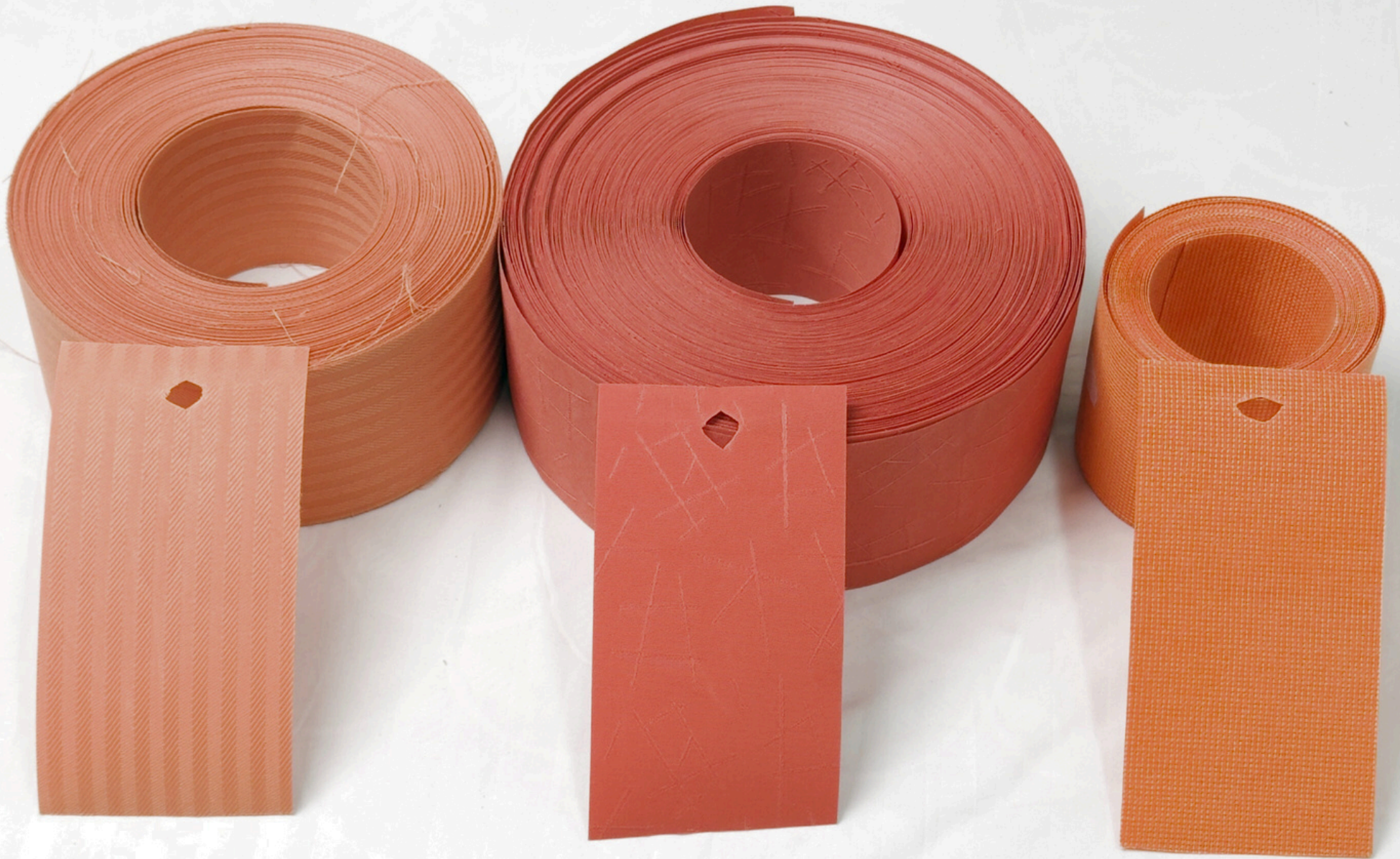
**V03-DARK GREEN**

A roll of vibrant green fabric with a subtle herringbone or chevron pattern. The fabric is unrolled from the top of the roll, creating a diagonal line across the frame. The background is a plain, light-colored surface.

**H507-5**



**C107-18**



A large roll of orange fabric with a herringbone pattern. The fabric is tightly packed in a roll, with a section of the fabric unrolled and draped over the side of the roll. The pattern consists of repeating V-shaped or chevron motifs. The color is a vibrant, slightly muted orange. The background is a plain, light-colored surface.

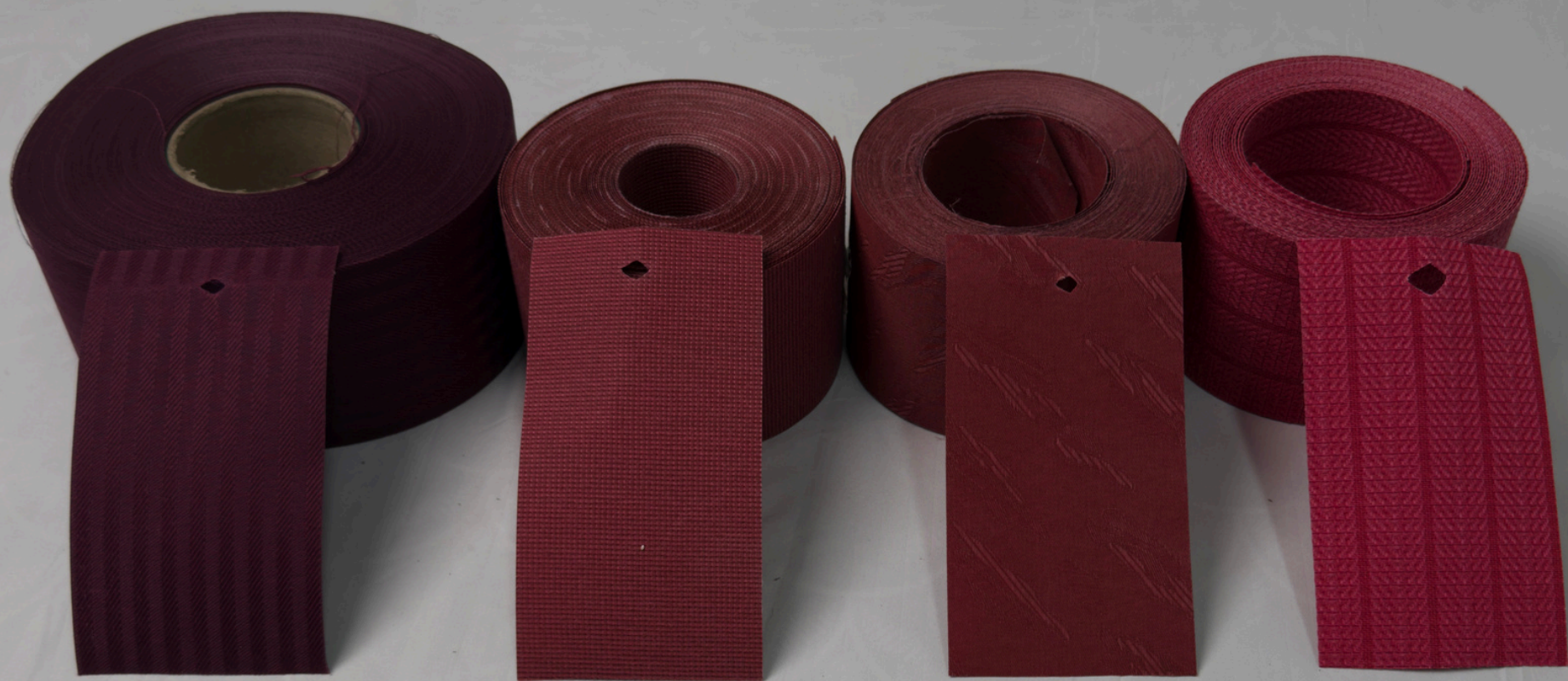
**V73-ORANGE**



**V9014-ORANGE**



**FS-V9103**







**LS0308**



**V9014-MAROON**

A large roll of maroon fabric with a herringbone pattern is shown on a green lawn. The fabric is unrolled, showing the texture and pattern. The roll is positioned diagonally across the frame.

**V300-20**  
**MAROON**



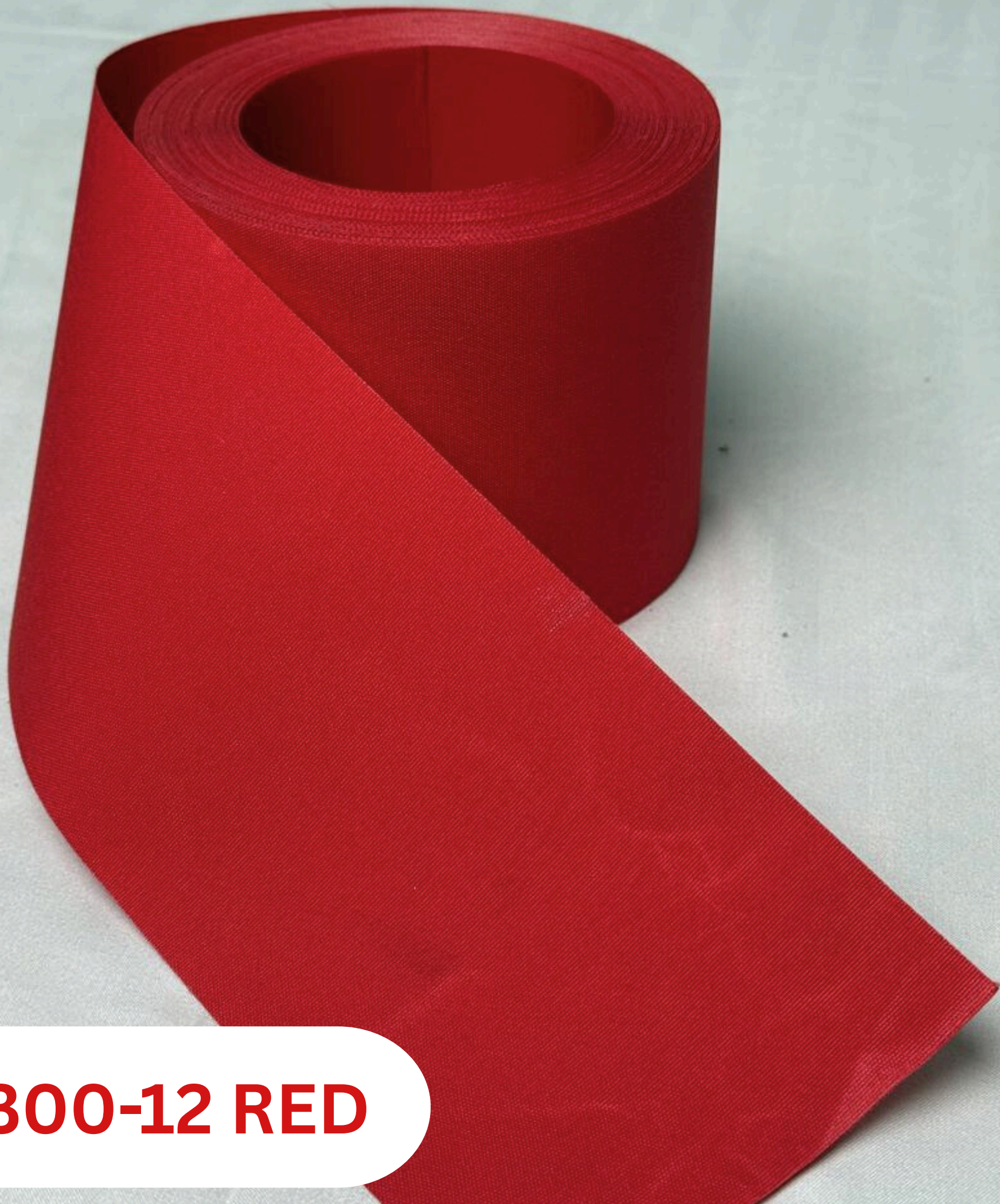
**V007-3**  
**MAROON**

A roll of red fabric with a woven texture, partially unrolled. The fabric is a deep red color and has a fine, regular weave pattern. The roll is positioned diagonally, with the unrolled portion extending from the bottom left towards the top right. The background is a plain, light-colored surface.

**C107-26**



**V24-RED**



**V300-12 RED**

A roll of red fabric with a herringbone pattern. The fabric is unrolled from the top of the roll, showing the intricate woven texture. The background is a neutral, light grey color.

**V05 - RED**





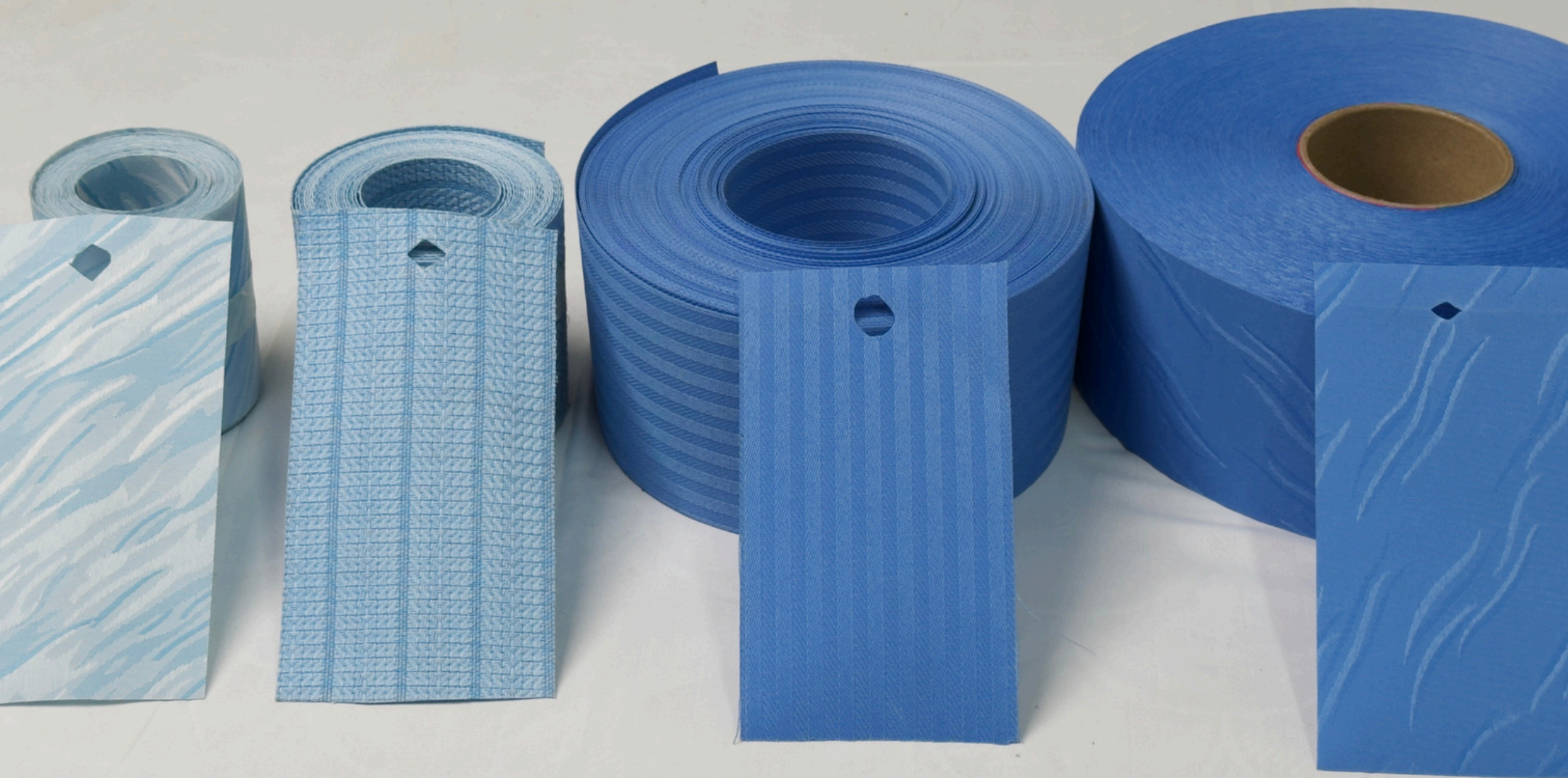
**V73-MAROON**



**FSV0511**



**V9014-PURPLE**





**V430-BLUE**



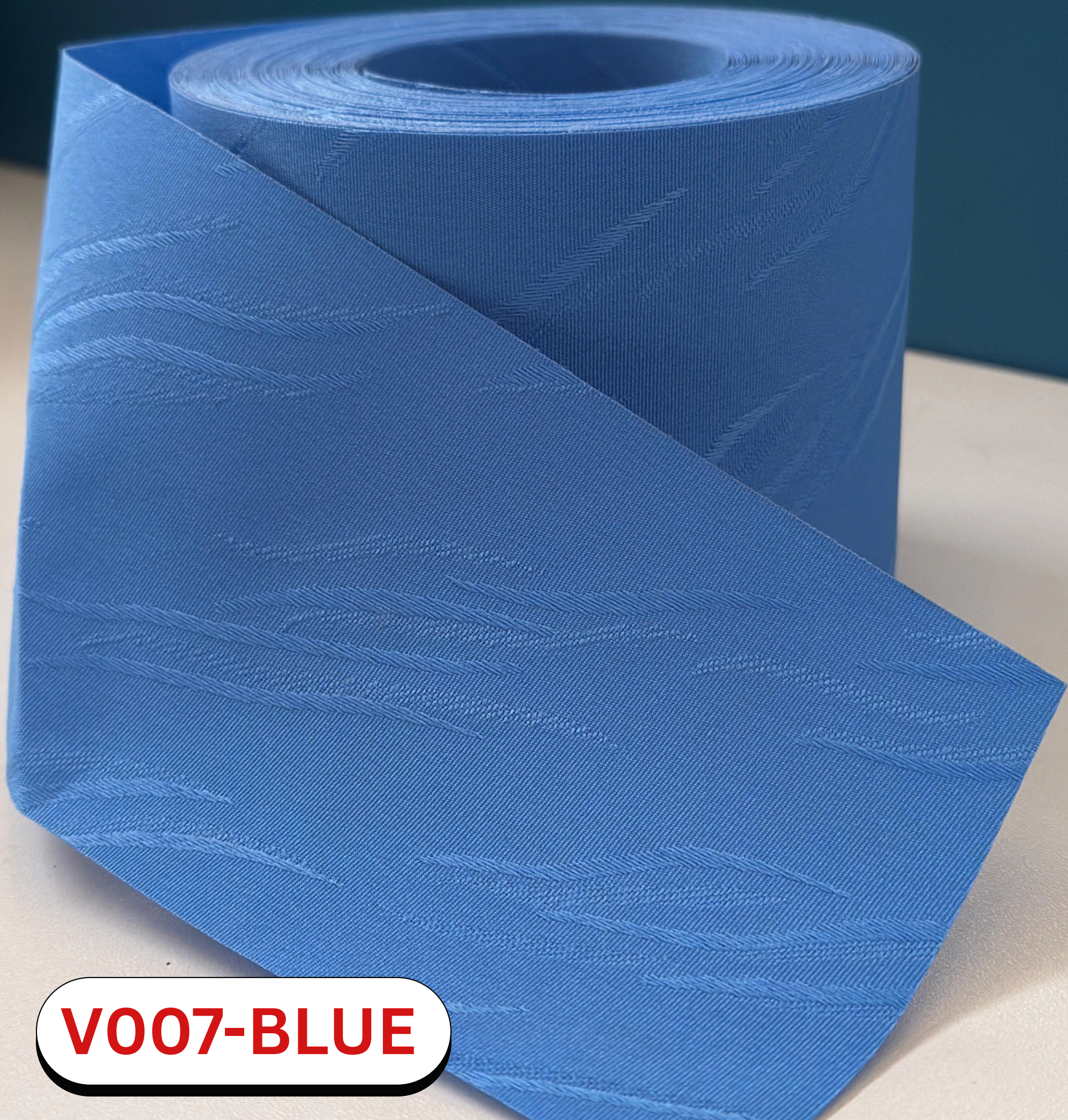
**C107-21**



**V73-BLUE**



**H0507-8**



**V007-BLUE**



**LS4106**

A roll of dark blue fabric with a herringbone pattern, partially unrolled. The fabric is tightly packed in a roll, and a section is pulled out to show the texture. The background is a light-colored, slightly wrinkled surface.

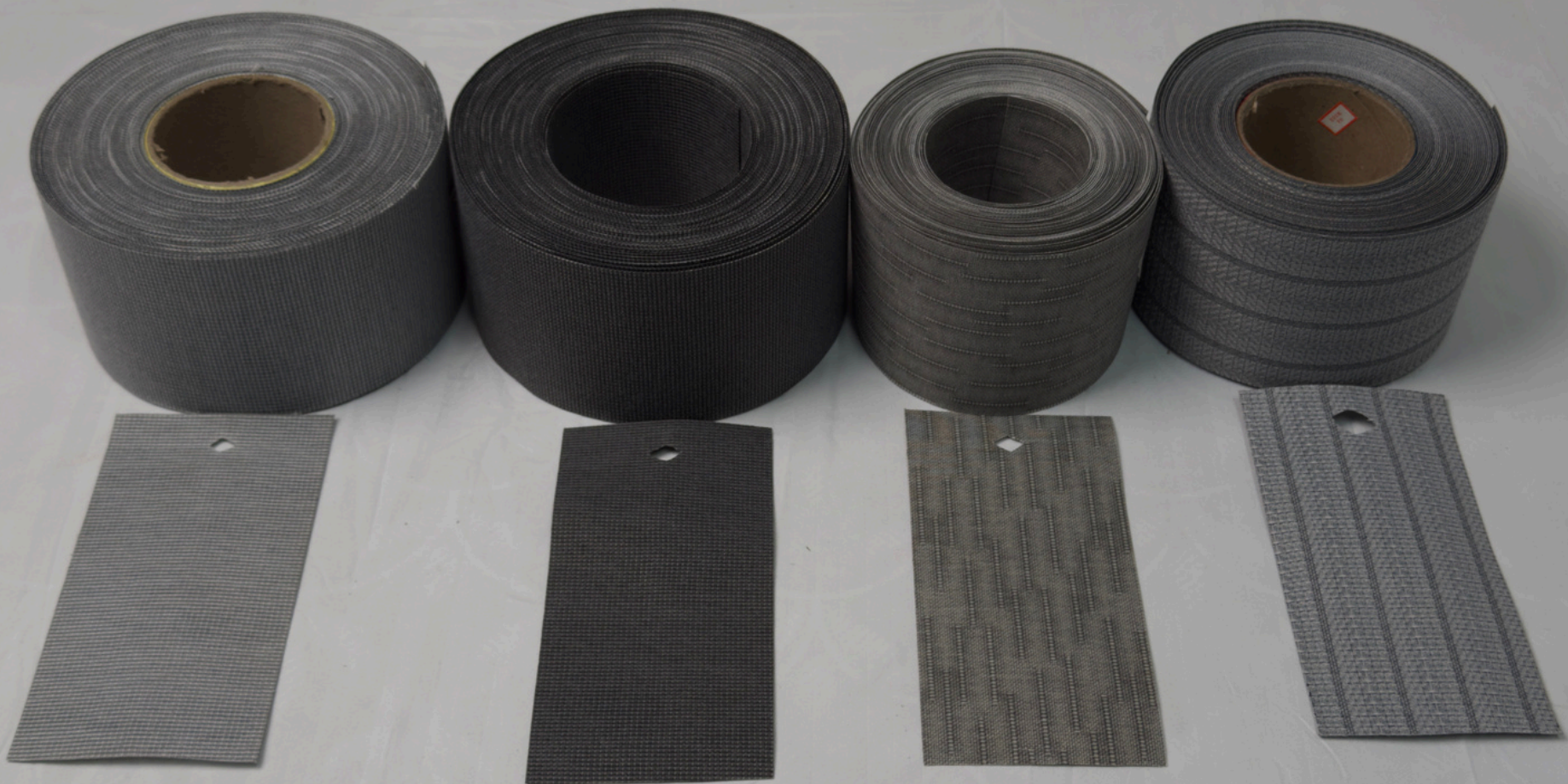
**V73-12**



**T480-7**



**LS4019**





**V9014-DARK  
GREY**



**V9014-BLACK**